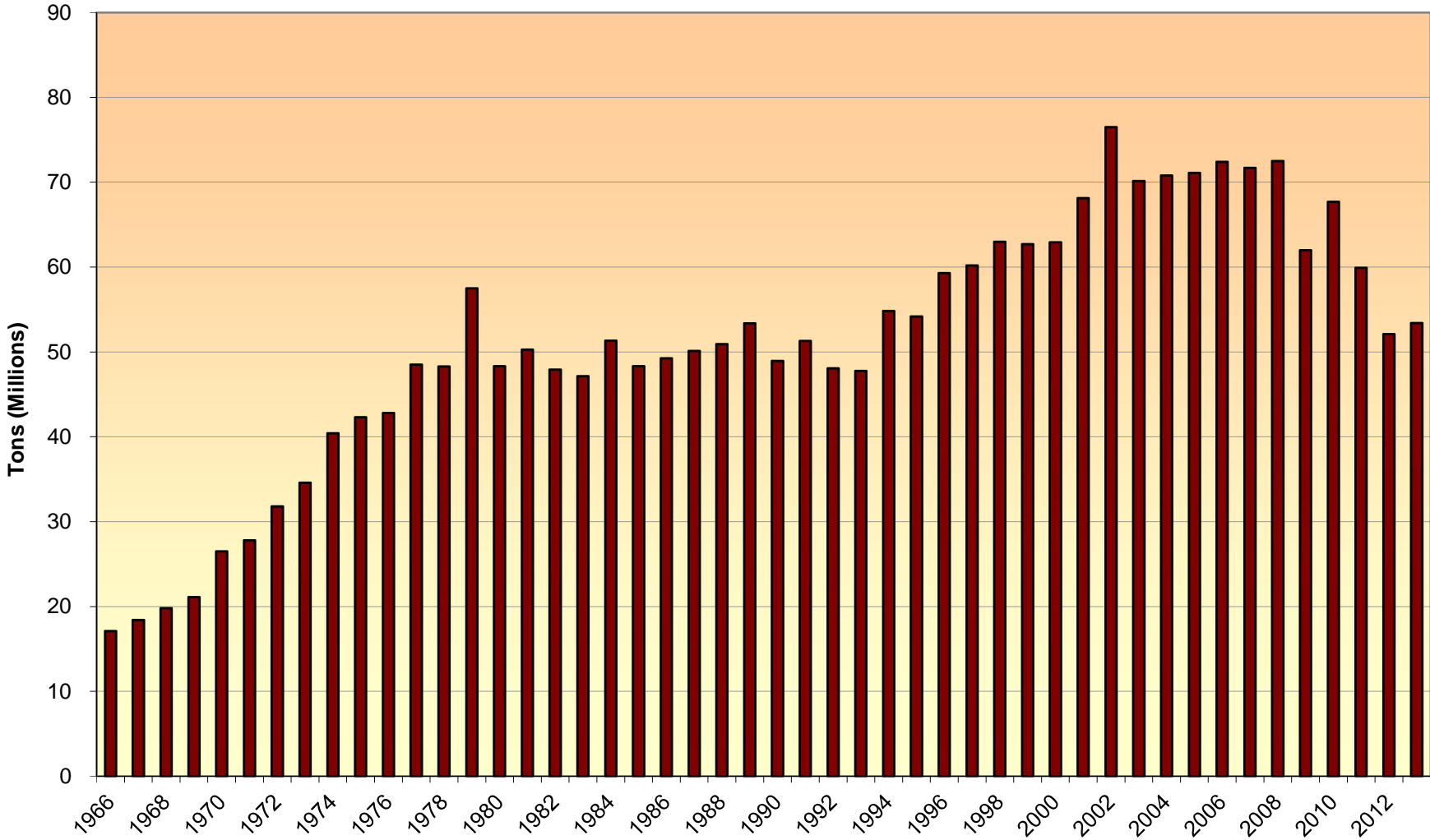


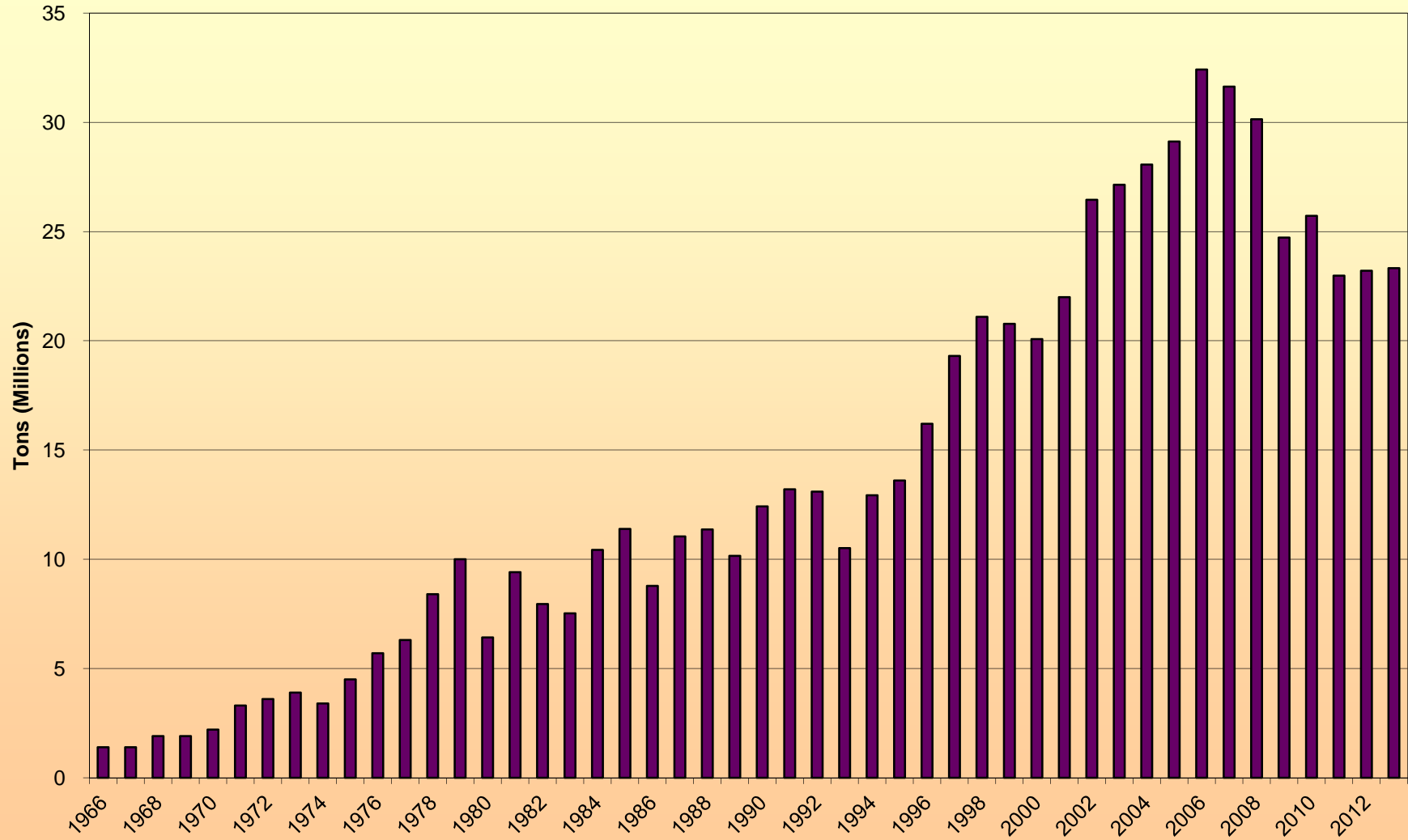
# FLY ASH PRODUCTION

*by Year (1966-2013)*

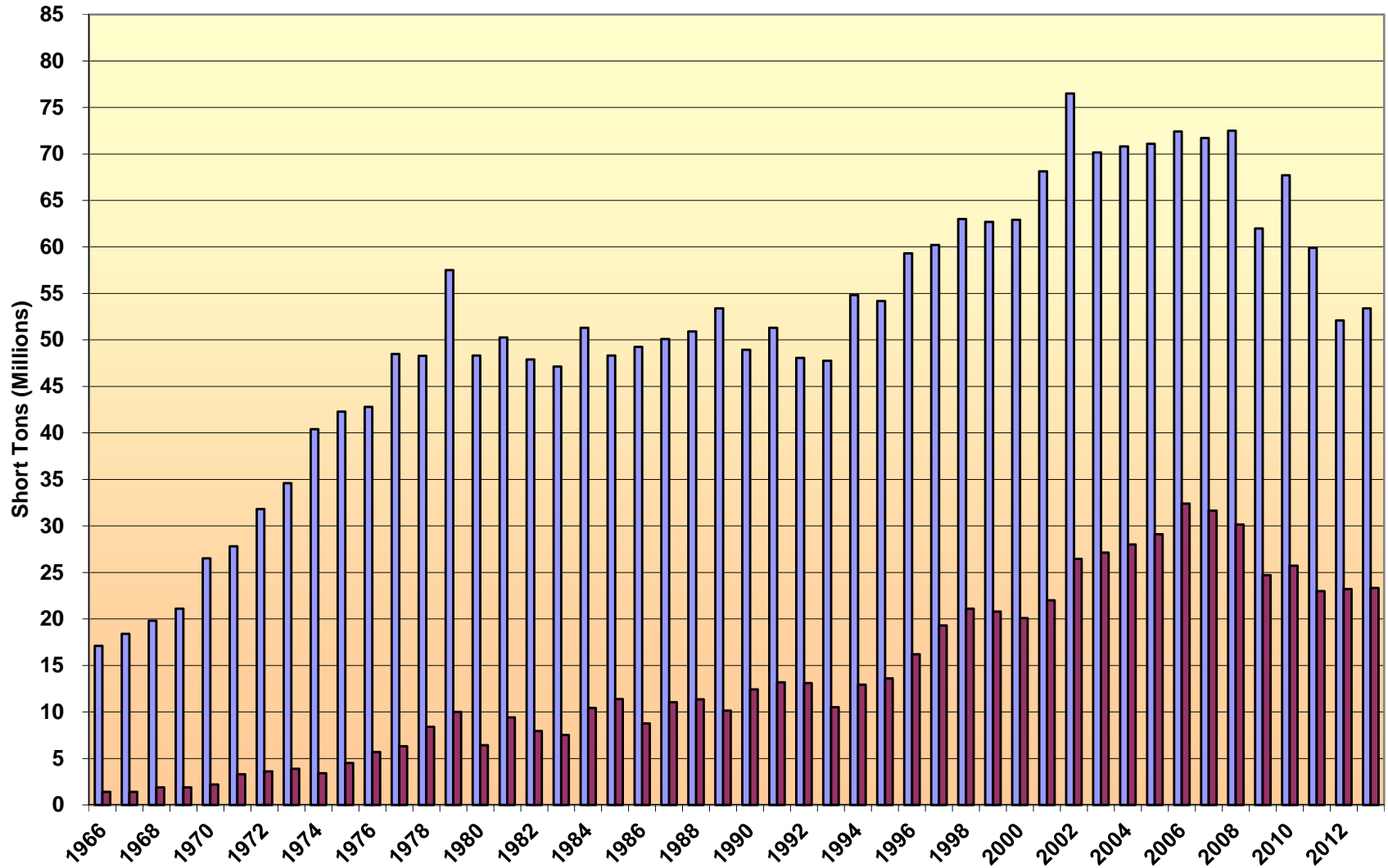


# Fly Ash Use

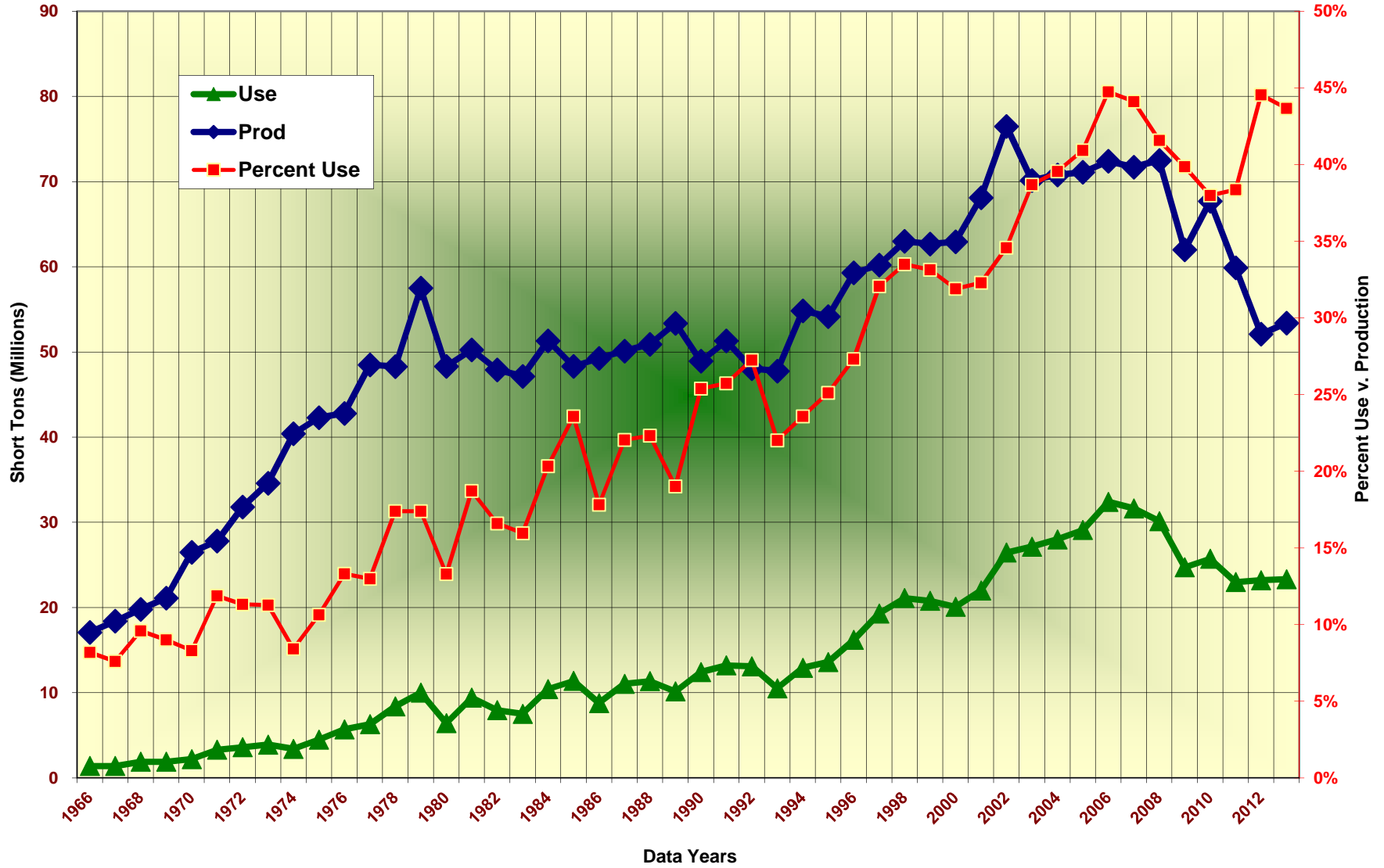
by Year (1966-2013)



### 1966 - 2013 Fly Ash Production & Use



ACAA Fly Ash Production & Use Comparisons 1966-2013



Survey Year	Prod
	FA
1966	17.10
1967	18.40
1968	19.80
1969	21.10
1970	26.50
1971	27.80
1972	31.80
1973	34.60
1974	40.40
1975	42.30
1976	42.80
1977	48.50
1978	48.30
1979	57.50
1980	48.31
1981	50.26
1982	47.91
1983	47.15
1984	51.32
1985	48.31
1986	49.26
1987	50.11
1988	50.91
1989	53.38
1990	48.93
1991	51.30
1992	48.06
1993	47.76
1994	54.84
1995	54.17
1996	59.30
1997	60.20
1998	62.99
1999	62.69
2000	62.93
2001	68.12
2002	76.50
2003	70.15

Survey Year	Use
	Fly Ash
1966	1.40
1967	1.40
1968	1.90
1969	1.90
1970	2.20
1971	3.30
1972	3.60
1973	3.90
1974	3.40
1975	4.50
1976	5.70
1977	6.30
1978	8.40
1979	10.00
1980	6.42
1981	9.41
1982	7.95
1983	7.52
1984	10.43
1985	11.39
1986	8.78
1987	11.05
1988	11.36
1989	10.15
1990	12.42
1991	13.20
1992	13.10
1993	10.51
1994	12.93
1995	13.60
1996	16.20
1997	19.30
1998	21.10
1999	20.78
2000	20.08
2001	22.00
2002	26.45
2003	27.14

	Prod	Use
	1966	17.10
1967	18.40	1.40
1968	19.80	1.90
1969	21.10	1.90
1970	26.50	2.20
1971	27.80	3.30
1972	31.80	3.60
1973	34.60	3.90
1974	40.40	3.40
1975	42.30	4.50
1976	42.80	5.70
1977	48.50	6.30
1978	48.30	8.40
1979	57.50	10.00
1980	48.31	6.42
1981	50.26	9.41
1982	47.91	7.95
1983	47.15	7.52
1984	51.32	10.43
1985	48.31	11.39
1986	49.26	8.78
1987	50.11	11.05
1988	50.91	11.36
1989	53.38	10.15
1990	48.93	12.42
1991	51.30	13.20
1992	48.06	13.10
1993	47.76	10.51
1994	54.84	12.93
1995	54.17	13.60
1996	59.30	16.20
1997	60.20	19.30
1998	62.99	21.10
1999	62.69	20.78
2000	62.93	20.08
2001	68.12	22.00
2002	76.50	26.45
2003	70.15	27.14

	Prod	Use	Percent Use
	1966	17.10	1.40
1967	18.40	1.40	7.61%
1968	19.80	1.90	9.60%
1969	21.10	1.90	9.00%
1970	26.50	2.20	8.30%
1971	27.80	3.30	11.87%
1972	31.80	3.60	11.32%
1973	34.60	3.90	11.27%
1974	40.40	3.40	8.42%
1975	42.30	4.50	10.64%
1976	42.80	5.70	13.32%
1977	48.50	6.30	12.99%
1978	48.30	8.40	17.39%
1979	57.50	10.00	17.39%
1980	48.31	6.42	13.29%
1981	50.26	9.41	18.72%
1982	47.91	7.95	16.59%
1983	47.15	7.52	15.95%
1984	51.32	10.43	20.32%
1985	48.31	11.39	23.58%
1986	49.26	8.78	17.82%
1987	50.11	11.05	22.05%
1988	50.91	11.36	22.31%
1989	53.38	10.15	19.01%
1990	48.93	12.42	25.38%
1991	51.30	13.20	25.73%
1992	48.06	13.10	27.26%
1993	47.76	10.51	22.01%
1994	54.84	12.93	23.58%
1995	54.17	13.60	25.11%
1996	59.30	16.20	27.32%
1997	60.20	19.30	32.06%
1998	62.99	21.10	33.50%
1999	62.69	20.78	33.15%
2000	62.93	20.08	31.91%
2001	68.12	22.00	32.30%
2002	76.50	26.45	34.58%
2003	70.15	27.14	38.69%

<b>2004</b>	70.80
<b>2005</b>	71.10
<b>2006</b>	72.40
<b>2007</b>	71.70
<b>2008</b>	72.50
<b>2009</b>	62.00
<b>2010</b>	67.70
<b>2011</b>	59.90
<b>2012</b>	52.10
<b>2013</b>	53.40

<b>2004</b>	28.07
<b>2005</b>	29.12
<b>2006</b>	32.42
<b>2007</b>	31.63
<b>2008</b>	30.14
<b>2009</b>	24.72
<b>2010</b>	25.72
<b>2011</b>	22.98
<b>2012</b>	23.21
<b>2013</b>	23.32

<b>2004</b>	70.80	28.00
<b>2005</b>	71.10	29.10
<b>2006</b>	72.40	32.40
<b>2007</b>	71.70	31.63
<b>2008</b>	72.50	30.14
<b>2009</b>	62.00	24.72
<b>2010</b>	67.70	25.72
<b>2011</b>	59.90	22.98
<b>2012</b>	52.10	23.21
<b>2013</b>	53.40	23.32

<b>2004</b>	70.80	28.00	39.55%
<b>2005</b>	71.10	29.10	40.93%
<b>2006</b>	72.40	32.40	44.75%
<b>2007</b>	71.70	31.63	44.11%
<b>2008</b>	72.50	30.14	41.57%
<b>2009</b>	62.00	24.72	39.87%
<b>2010</b>	67.70	25.72	37.99%
<b>2011</b>	59.90	22.98	38.36%
<b>2012</b>	52.10	23.21	44.55%
<b>2013</b>	53.40	23.32	43.67%